

Thank you to the
2014 Schuylkill County Fair

Platinum Sponsors – \$5,000 and Up

Kreitzer Sanitation
M & T Bank
Schaeffer's Harley-Davidson
Schuylkill County Commissioners
Weston Estate
Dennis & Pauline Fehr

Gold Sponsors – \$2,500 and Up

Mattera's Inc. General
Contracting and Electrical Service
Verizon 4G
Wiest RV
Red Lion Café

Silver Sponsors – \$1,500 and Up

Comfort Inn Midway
Felty Brewers Grain
Fidler Brothers Construction
Hess Catering
Hometown Farmers Market
South Schuylkill Printing & Publishing
Bartush Signs
VIST Bank
Halabura Farms
The Dunn Family
Kiwanis of Sch. County

Bronze Sponsors – \$750 & Up

Schuylkill County Dairy Promotion
Sch. County Quilters Guild
Morgan Meadow Farms
Gruber Excavating
L & L Excavating, Inc.
Goodtime Amusements

Fair Sponsors – \$500 and Up

B.G. Value Market
Boyer's Food Market
Friedensburg Fire Company
Moyers Car Care Center,
Pine Creek Garden Center
Robert Derfler, Auctioneer,
Schuylkill County 4-H Programs
St. Clair Lions Club
Tractor Supply
Darin Brensinger Electric
Sch. County Conservation District
Gordon Foods

PPL Electric Utilities
Lehigh Law Enforcement Officers
Association, Inc.
Walmart Distribution Center

Patrons

Lions/Leo Clubs of Sch. Co.
Bill's Produce, Sch. Haven
Weis Markets, Pottsville
Giant Foods Stores
Guer's Tumbling Run Dairy
Valentis I, Orwigsburg
Valentis II, Sch. Haven
TNT Deli, St. Clair
Farlow's Philadelphia Deli, Pottsville
Theresa Gaffney
Penn State Master Gardeners
The White Pear Eco Chic Boutique
Ashley Farr Photography
Guys Flowers
Pioneer Pole Buildings
Diakon Living and Learning
Minersville Auto Parts
NAPA Auto Parts
Mountain Edge Farm – The Bray Family
Schuylkill County Reading Council
Sch. County Sportsmen Association
Special Moments
Zeus Light and Sound
Binkley & Hurst
Outback Toys
Apline Building Supply
Rigidply
Werner's Lumber
Miller Family

And we would like to thank everyone
who has donated their premium
checks back to the Fair

DIRECTIONS:

Just 40 minutes from Harrisburg or Allentown;
Nestled in the Blue Mts. From I-78 Exit 19, Rt. 183
North to Rt. 895 East – 1.5 Miles to Fair
• Or, From I-81N Exit 124A, Rt. 61 South to
Rt. 183 South to Rt. 895 East
• Or, From Rt. 309 to Rt. 895 West to Auburn
7 Miles to Fair
GPS: 2270 Fair Road, Sch. Haven, PA 17972
570-754-3247
www.schuylkillfair.com

No Pets or Coolers Allowed on Fairgrounds
Designated Smoking Areas • Shirts and Shoes Required
NOTE: Entertainment Shows & Times Are Subject to Change
2015 Schuylkill County Fair – July 27 to Aug. 1



**Rooted in the
Community for 31 Years**

Daily Admission:

\$8 Monday - Wednesday
\$10 Thursday & Saturday
\$12 Friday

Senior Citizen (65+) – \$6 Daily
Kids Under 35" – FREE

Week-Long Pass

Regular – \$30 • Sr. Citizen – \$25

One Price Admission Includes:

National Entertainment on the
M&T Bank Stage, Unlimited Rides,
Contests, Exhibits, Free Parking

Gates and Amusement Rides

4 PM – Mon, Weds, Thurs, Fri
11 AM – Tues and Sat

And a Special Thank You to the
Schuylkill County Commissioners
and the PA Dept. of Agriculture for their
continued support of the Schuylkill County Fair

2015 Schuylkill County Fair – July 27 - Aug. 1

2014 SCHUYLKILL COUNTY FAIR

– Week Long Events –

• Ag Museum & Antique Machinery Demos

• Nature Center; Farming for A Day;

Ag Detective; Porcupine Pat; Story Time with
Sch. Co Reading Council;

Children and Adult Contests; Bingo; Crafts in Kids Area

(Not included with Admission – Petting Zoo
& other private attractions)

SATURDAY, JULY 26 – ENTRY DAY

Entries of General Exhibits – 11 a.m. to 3 p.m.

Kauffman's Chicken Pickup

9:00 a.m. – 4-H Horse Show (Horse Ring)

SUNDAY, JULY 27 – JUDGING DAY/Fair Closed

MONDAY, JULY 28 – M&T PULLING DAY

\$8 Admission – Sponsored by M&T Bank

9 a.m. – 4-H/FFA Rabbit Show (Livestock Area)

1 p.m. – 4-H/FFA Market Goat Show (Ag Arena)

3 p.m. – Queen/Princess Contest (M&T Stage)

4 p.m. – 4-H/FFA Breeding Meat / Dairy Goat Show

4 p.m. – Fair Officially Opens to Public w/Ceremonies

4 p.m. – Tractor Parade – Theme: Pulling

6:30 p.m. – Fly Fishing Demo – Sch. Co. Sportsmen Assoc.

7 p.m. – Shake, Rattle & Soul

Sponsored by M&T Bank (M&T Bank Stage)

7 p.m. – Diesel Truck Pull (Ag Museum)

7 p.m. – Dairy Judging Contest (Show Ring)

8 p.m. – Royalty Crowning (M&T Stage)

9 p.m. – Tim Marchetto Show

Sponsored by M&T Bank (M&T Bank Stage)

TUESDAY, JULY 29 – KIDS DAY

\$8 Admission – Sponsored by

Mattera's Inc., General Contracting and Electrical Service

8 a.m. – 4-H/FFA Market Swine Show (Ag Arena)

11 a.m. – Fair Opens to Public

11 a.m. – ID Me, Child Identification Program

11 a.m. – Tuscarora R.C. Club Display (M&T Stage Area)

12 p.m. – Bee Bundle w/ Master Gardeners

12 p.m. – Big Owl Indian Lore (Bear Creek Island)

12 p.m. – Jell-O Eating Contest (Kids' Area)

12:15 p.m. – Ice Cream Eating Contest (Kids' Area)

12:30 p.m. – Corn Husking (Ag Arena)

12:30-2:30 p.m. – Ag Arena Activities (Ag Arena)

1 p.m. – Watermelon Roll (Kids' Area)

1:30 p.m. – Tractor Parade – Theme: Kids Cartoons

1:30 p.m. – Sunflower Seed Spitting Contest (Kids' Area)

2 p.m. – Pie Eating Contest (Kids' Area)

2:30 p.m. – Milk Chugging Contest (Kids' Area)

3 p.m. – 4-H/FFA Alpaca/ Sheep Show (Ag Arena)

5 p.m. – Sch. County Winery Cooking Contest

5:30 p.m. – Pedal Tractor Pull (Kids' Area)

6 p.m. – Kids Cooking Contest

6:00 p.m. – Celebrity Showman Competition (Show Ring)

7 p.m. – Gas Truck Pulls (Ag Museum)

7 & 9 p.m. – Twitty Fever Band, Country

Sponsored by Red Lion Café

WEDNESDAY, JULY 30

Treasure the Memories of Our Roots

\$8 Admission – Sponsored by

Schuykill County Commissioners

9 a.m. – 4-H/FFA Market Steer/ Breeding (Ag Arena)

11 a.m. – Diary Beef Show

4 p.m. – Fair Opens to Public

4 p.m. – Family Feud (Ag Arena)

4:30 p.m. – Tractor Parade – Fair Theme

5 p.m. – Ethnic Cooking Contest

6 p.m. – Horse Show (Horse Ring)

6 p.m. – Adult Milk Chugging (Kid's Area)

6 p.m. – Adult Pie Eating (Kid's Area)

6 p.m. – Historical Walk with Mark Major

7 p.m. – Celebrity Tractor Pull

7:30 p.m. – Boilo Competition

7 & 9 p.m. – Jesse Wade Gang, Country

Sponsored by L & L Excavating Inc.

8 p.m. – Big Owl Indian Lore (Bear Creek Island)

THURSDAY, JULY 31 – DAIRY DAY

\$10 Admission

9 a.m. – 4-H/FFA Dairy Show (Show Ring)

Sponsored by Hometown Farmers Market

4 p.m. – Fair Opens to Public

4:30 p.m. – Tractor Parade – Theme: Dairy

4:30 p.m. – Market Livestock Bidders Reception (Main Hall)

5 p.m. – Threshing Demonstration

6:30 p.m. – Muzzle Loader Demo

Sch. Co. Sports. Assoc.

6 p.m. – 4-H/FFA Livestock & Dairy Champion Milk Sale

7 p.m. – Kevin Chalfant's Journey Experience

9 p.m. – John Cafferty and Michael Antunes

(of Beaver Brown Band) w/ Hybrid Ice

Sponsored by Comfort Inn Midway &

Fidler Brothers Construction, Inc.

FRIDAY, AUG. 1 – COUNTRY DAY

\$12 Admission – Sponsored by

Schaeffer's Harley-Davidson

8:30 a.m. – Open Dairy Show (Ag Arena)

10 a.m. – Poultry Show

4 p.m. – Fair Opens to Public

4:30 p.m. – Tractor Parade – Theme: Harley Hog

5 p.m. – Master Showman Contest (Ag Arena)

5 p.m. – Threshing Demonstration

6 p.m. – Yukon Gold Potato Cooking Contest (PA Pref.)

6:00 p.m. – Hay Bale Toss (Kid's Area)

7 p.m. – Kendall Phillips

Nashville singer-songwriter, actress

7:30 p.m. – DJ Chicken Nugget, **Line Dancing**

(Main Exhibit Hall South Overhang)

Sponsored by Schuykill County 4-H Program

8 p.m. – Big Owl Indian Lore (Bear Creek Island)

9 p.m. – Exile

Sponsored by Schaeffer's Harley-Davidson

www.schuykillfair.com

GPS Finder – 2270 Fair Road

Schuykill Haven, PA 17972

SATURDAY, AUG. 2 – FAMILY FUN DAY

\$10 Admission – Sponsored by Kreitzer Sanitation

11 a.m. – Fair Opens to Public

11 a.m. – Registration for Antique Tractor Pull (Ag Museum)

11 a.m. – ID Me, Child Identification Program

1:00 p.m. – Antique Tractor Pull (Ag Museum)

1:00 p.m. – Tower of Power Contest

1:30 p.m. – Tractor Parade – Theme: Family Fun

2 p.m. – Pocket Pet Contest (Ag Arena)

3 p.m. – Catapult Craft/Contest (Kid's Area)

3 p.m. – Big Owl Indian Lore (Bear Creek Island)

3:30 p.m. – Kids Hay Bale Toss, ages 5 – 10 (Kid's Area)

4 p.m. – Egg Relay (Kid's Area)

4 p.m. – Watermelon Seed Spitting Contest (Kid's Area)

5 p.m. – Potato Sack Race (Kid's Area)

5:30 p.m. – Penny / Candy Scramble (Kid's Area)

6 p.m. – Schuykill County Idols (M & T Stage)

7 & 9 p.m. – Brandon Bennett, Ultimate Elvis

Sponsored by Kreitzer Sanitation

ENTERTAINMENT EACH DAY

AMPHITHEATER: JOHNNY PEERS &

THE MUTTVILLE COMIX

6 & 8 p.m. Tue-Sat; Tue. 2 p.m.; Sat. 4 p.m.

Sponsored by Weston Estate

**WESTON PAVILION: PEGGY HENTZ "RED
CREEK WILDLIFE REHABILITATION CENTER"**

6:30 p.m. Daily

Sponsored by The Weston Estate

SCHAEFFER'S HARLEY DAVIDSON STAGE:

SCHUYLKILL TALENT SHOWCASE

5:30 & 7:30 Daily

Sponsored by Weston Estate and

Zeus Light and Sound

SHADLE NATURE CENTER: PORCUPINE PAT

Mon. - Fri. 5 p.m.; Tues. 1 p.m.; Sat. 4 p.m.

Sponsored by Sch. County Conservation Dist.

FARMING FOR A DAY: AG-TAINMENT – DAILY

Sponsored by The Dunn Family

STORY TIME – 6 P.M. DAILY

Sponsored by Sch. Co. Reading Council

UPPER MIDWAY: TODD GLADFELTER

Chain Saw Artist – 5:30 p.m. Daily

KIDS AREA: CONTESTS, GAMES, CRAFTS

Sponsored by Kiwanis of Schuykill County

TRUCK PULLS 2014

DIESEL – Mon., July 28 • GAS – Tue., July 29

Weigh-In 4 p.m.; Pulls Start 7 p.m.

ANTIQUE Tractor Pull – Sat., Aug. 2, 1 p.m.

FAIR ASSOCIATION

Fax Number..... 866-483-7010

General Information 570-739-2627

General Info (Fair Week)..... 570-754-FAIR (3247)

Vendor Information 570-205-1763

Group Admission 570-739-4476 or 294-0776



NATIONAL ENTERTAINMENT

ON THE M&T BANK STAGE

July 28 – Aug. 2, 2014

RT. 895 - SUMMIT STATION, PA

MON., JULY 28

M&T PULLING DAY

\$8 Admission – Sponsored by M&T Bank

TIM MARCHETTO SHOW

Show time – 9 p.m.



SHAKE, RATTLE & SOUL

Show time – 7 p.m.

DAILY ENTERTAINMENT

AMPHITHEATER

JOHNNY PEERS & THE MUTTVILLE COMIX

6 & 8 p.m. Tue-Sat
Tue. 2 p.m.; Sat. 4 p.m.

Sponsored by Weston Estate

WESTON PAVILION

PEGGY HENTZ "RED CREEK WILDLIFE REHABILITATION CENTER"

6:30 p.m. DAILY

Sponsored by The Weston Estate

SCHAEFFER'S H-D STAGE

SCHUYLKILL TALENT SHOWCASE

5:30 & 7:30 DAILY

Sponsored by Weston Estate and Zeus Light and Sound

SHADLE NATURE CENTER

PORCUPINE PAT

Mon.-Fri. 5 p.m.; Tues. 1 p.m.; Sat. 4 p.m.

Sponsored by Sch. County Conservation Dist.

FARMING FOR A DAY

AG-TAINMENT – DAILY

Sponsored by The Dunn Family

STORY TIME 6 p.m. – DAILY

Sponsored by Sch. Co. Reading Council

DOC SWAN Roving the Midway

UPPER MIDWAY

TODD GLADFELTER

Chain Saw Artist – 5:30 p.m. DAILY

KIDS AREA

CONTESTS, GAMES, CRAFTS

Sponsored by Kiwanis of Schuylkill County

DIRECTIONS:

Just 40 minutes from Harrisburg or Allentown; Nestled in the Blue Mts.

From I-78 Exit 19, Rt. 183 North to Rt. 895 East – 1.5 Miles to Fair

• Or, From I-81N Exit 124A, Rt. 61 South to Rt. 183 South to Rt. 895 East

• Or, From Rt. 309 to Rt. 895 West to Auburn – 7 Miles to Fair

GPS: 2270 FAIR ROAD

SCHUYLKILL HAVEN, PA 17972

(570) 754-3247

www.schuylkillfair.com

Special Guest Performer

KENDALL PHILLIPS

Nashville singer-songwriter, actress

Show time 7 p.m.



TUE., JULY 29

KIDS DAY

\$8 Admission

Sponsored by Mattera's Inc., General Contracting and Electrical Service

TWITTY FEVER BAND

Sponsored by Red Lion Café

Country Music – Show times – 7 & 9 p.m.

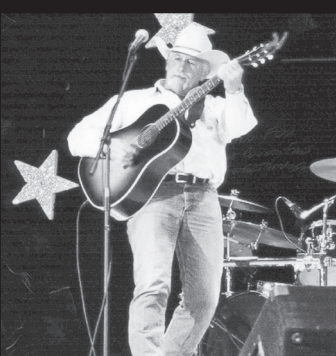


WED., JULY 30

TREASURE THE MEMORIES OF OUR ROOTS

\$8 Admission

Sponsored by Schuylkill County Commissioners



JESSE WADE GANG

Sponsored by L&L Excavating Inc.

Country Music Show times – 7 & 9 p.m.

THU., JULY 31

DAIRY DAY

\$10 Admission

Sponsored by Comfort Inn Midway & Fidler Brothers Construction, Inc.



KEVIN CHALFANT

The first stand-in singer for Steve Perry of Journey

Show time – 7 p.m.



JOHN CAFFERTY AND MICHAEL ANTUNES

(of the Beaver Brown Band) with Hybrid Ice

Show time – 9 p.m.

FRI., AUG. 1

COUNTRY DAY

\$12 Admission

Day & Show Sponsored by Schaeffer's Harley-Davidson

EXILE Show time – 9 p.m.



11 #1 Hits – Including "Kiss You All Over"

SAT., AUG 2

FAMILY FUN DAY

\$10 Admission

Day & Show Sponsored by Kreitzer Sanitation

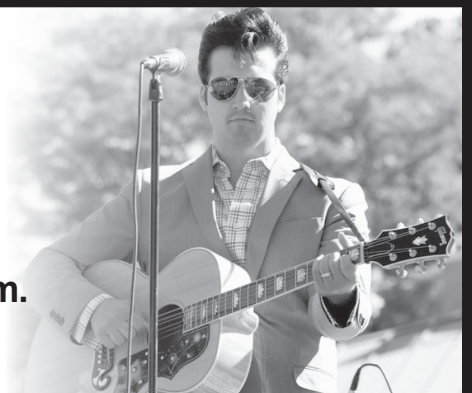
Special Guest Performers SCHUYLKILL COUNTY IDOLS Show time – 6 p.m.



BRANDON BENNETT

ULTIMATE ELVIS

Show times – 7 & 9 p.m.



TRUCK PULL – Mon., July 28 (Diesel) • Tues., July 29 (Gas) • Sat., Aug. 2 (Antique Tractor)